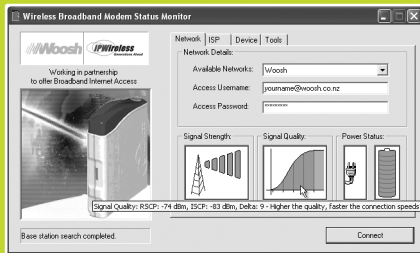




## Checking Your Signal

- + You can use the Woosh dialler to check your signal strength and signal quality. Start the Woosh dialler from the Desktop.
  - *Signal strength* = the strength of the signal reception between the local cell site and the modem.
  - *Signal quality* = 'Delta' that is the difference between RSCP (received signal) and the ISCP (interference signal). For optimum connection, aim for a higher 'Delta' figure as possible.



- + Move your mouse over the Signal Quality graph to view details.
- + Adjust and move your modem (or booster antenna if applicable) to find the best possible signal.

**NEED HELP?** If you want to speak to our friendly Contact Centre, simply call 0800 4 WOOSH (0800 4 96674) for FREE customer service and technical support. We also offer free in-home support as standard. That means if you have any problems we can't sort out over the phone, you can arrange for our Support Crew to come around and sort it all out for you. [www.woosh.com](http://www.woosh.com)

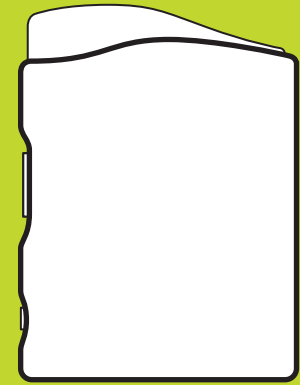
PRINTED NOVEMBER 2007 (3182 WW)

# Woosh Modem Quick Reference Guide

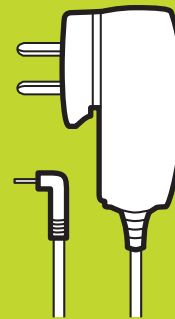
Your Modem connection kit contains:



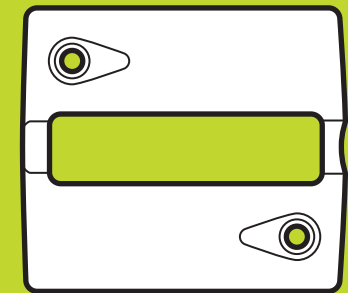
INSTALLATION CD



MODEM



POWER SUPPLY



MODEM CRADLE



USB CABLE

ITEMS SHOWN ARE NOT TO SCALE

## Installing the Modem

- 01 **Place the Modem upright in the stand provided. Insert Power Supply in the Modem, then connect plug to a wall socket and turn on the Modem.**
- 02 **Insert the Woosh CD and run the install wizard before connecting the modem to your computer. (If the CD does not automatically start, browse to the CD in Windows Explorer and run wooshwireless.exe).**
  - (a) Follow instructions on screen. There will be instances where you will be offered options. Please select:
    - > 'Setting up the internet only' > 'Modem Connection Kit'
  - (b) Accept the licence agreement and wait for the files to transfer.
- 03 **When instructed, switch on the modem power and connect to your computer using the USB or PPPoE cable chosen.**
  - (a) Follow instructions clicking 'Next' to detect Modem, and register online.
- 04 **Connect to Woosh, and complete the rest of the registration process. When prompted, type your full username (wooshuser@woosh.co.nz) and your password.**
  - > Click 'Login' > 'Next' to finish.
- 05 **Open the 'Wireless Broadband Modem Dialler' on the Desktop, click 'Connect'.**

DIAGRAM SHOWING MODEM INDICATORS (VIEW FROM TOP)

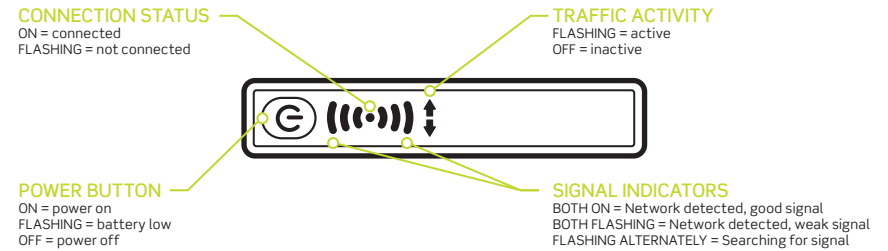
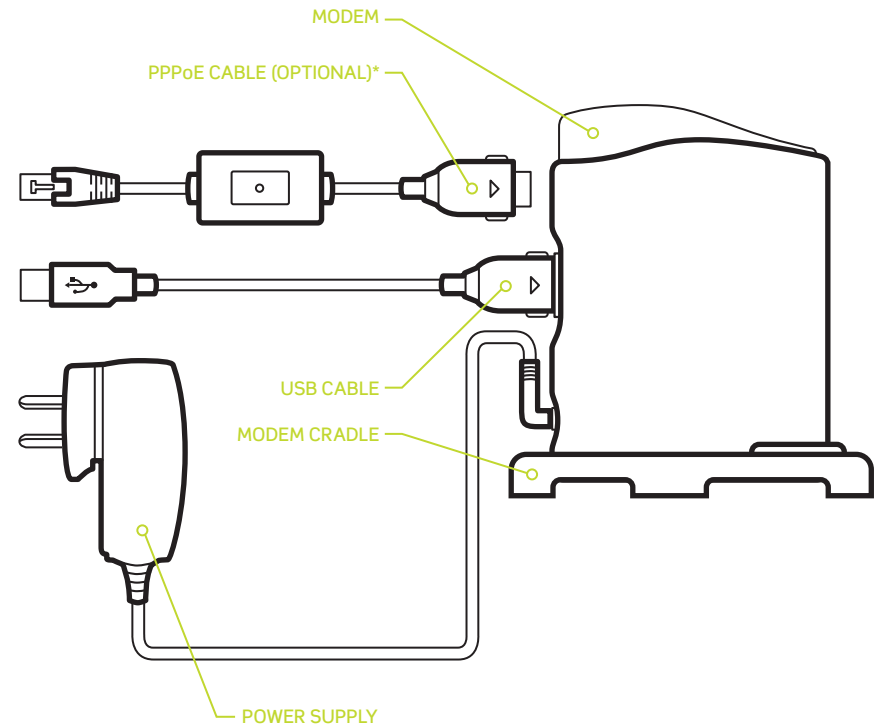


DIAGRAM SHOWING HOW TO SET UP YOUR MODEM



\*Suitable for any operating system or router capable of PPP over Ethernet (PPPoE). Extra charges may apply.